



Pinlock Suspension



Ratchet Suspension

The Peak Slotted Safety Cap

NORTH

Features a high-density polyethylene shell with reinforcing ribs for added strength and a rain trough to channel rainwater away from the neck. The four-point nylon web suspension is impervious to bad weather. The vertically adjustable headband has three positions for a comfortable fit. Includes a foam-backed perforated vinyl sweatband. Side slots allow eye and hearing protection accessories to be attached easily. Both models meet ANSI Z89.1-2003 Type I, Class E and CSA Class E standards.



Item No	Description	Color	Unit
NORA79	A79 Peak, Pinlock	Specify	Each
NORA79R	A79R Peak, Ratchet	Specify	Each



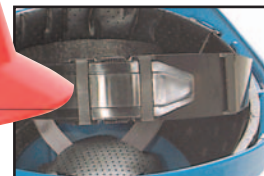
A49R



Everest Wide Brim Safety Hat

Made from durable high-density polyethylene and provides excellent impact protection. The wide brim style offers added protection from UV rays and rain. Universal accessory slots allow for easy attachment of earmuffs and/or faceshields. Includes a stable and comfortable six-point nylon web suspension, comfort band and crown pad, and height adjustment. Adjustable pinlock or ratchet suspension. Meets ANSI Z89.1 Type I, Class E and CSA Z94.1 Type 1, Class E (top impact protection).

Item No	Description	Color	Unit
NORA49	A49 Everest, Pinlock	Specify	Each
NORA49R	A49R Everest, Ratchet	Specify	Each



Quick-Fit Suspension



Ratchet Suspension

NORTH

Matterhorn Safety Cap

Combines a high-density polyethylene outer shell with a comfortable inner foam liner. Four-point suspension is available with either the Quick-Fit sliding feature or an adjustable ratchet design. Rain trough channels away excess water. Includes accessory slots. Meets ANSI Z89.1 Type II and CSA Z94.1 Type 2, Class E.

Item No	Description	Color	Unit
NORA89	A89 Matterhorn, Quick-Fit	Specify	Each
NORA89R	A89R Matterhorn, Ratchet	Specify	Each



Low Hazard Bump Cap

NORTH

Constructed of lightweight polyethylene that resists cracking and chipping. Ideal for food processing, airline and automobile applications. Lightweight cap features a four-point pinlock suspension and weighs only 7.3 ounces. Short peak, low-profile design. **Caution:** Bump Caps do not meet ANSI standards and are not to be worn for protection from falling or glancing objects.



Item No	Description	Color	Unit
NORBC89	BC89 Bump Cap	Specify	Each

HDPE HARD HAT COLORS

01 White	05 Hi-Viz	09 Grey	13 Gold	17 Royal Blue
02 Yellow	06 Light Blue	10 Beige	14 Avocado	18 Maroon
03 Orange	07 Sky Blue	11 Black	15 Red	19 Burgundy
04 Dark Green	08 Navy Blue	12 Brown	16 Army Green	20 Pink

Specify color when ordering by adding the following suffixes to the base part number: White (01), Yellow (02), Orange (03), Dark Green (04), Hi-Viz (05), Sky Blue (07), Navy Blue (08), Gray (09), and Red (15). Example: A79R01 is a White Peak Helmet with ratchet suspension.

SAFETY HELMETS



V-Gard® Safety Caps and Hats



V-Gard Safety Caps and Hats provide superior protection with one-piece injection-molded shells made of high-density polyethylene. Lightweight and balanced for all-day wearing comfort. The **Slotted Cap** is available in three sizes: small (6 to 7½), standard (6½ to 8), and large (7½ to 8½), and four suspensions: Staz-On® (slotted), Fas-Trac® (ratchet), the one-piece plastic UniPro™ (standard size only) or the 1-Touch™ (standard size only). UniPro is an energy-absorbing four-point suspension with an integral sweatband and nape strap that sits low on the back of the head for added comfort and a more secure fit. The innovative 1-Touch suspension features easy one-hand squeeze opening and one-hand slide adjustment and snap closure. The **Nonslotted Hat** is offered with Staz-On, Fas-Trac or 1-Touch suspension. The most popular fade-resistant colors are listed. Call for additional colors. Meets ANSI Z89.1-2003 standards for Type I, Class E helmets. SEI certified.



Item No	Color	Unit
Slotted Cap, Standard, Staz-On Suspension		
MSA463942	White	Each
MSA463943	Blue	Each
MSA463944	Yellow	Each
MSA463945	Orange	Each
MSA463947	Red	Each
MSA463946	Green	Each
MSA475235	Black	Each
Slotted Cap, Standard, Fas-Trac Suspension		
MSA475358	White	Each
MSA475359	Blue	Each
MSA475360	Yellow	Each
MSA475361	Orange	Each
MSA475363	Red	Each
MSA475362	Green	Each
MSA488146	Hi-Vis Orange	Each
MSA492559	Black	Each
Slotted Cap, Standard, 1-Touch Suspension		
MSA10057441	White	Each
MSA10057442	Blue	Each
MSA10057443	Yellow	Each
MSA10061515	Hi-Vis Yellow	Each

Item No	Color	Unit
Slotted Cap, Standard, UniPro Suspension		
MSA10004760	White	Each
MSA10004761	Yellow	Each
MSA10004762	Blue	Each
MSA10004763	Red	Each
MSA10004764	Orange	Each
MSA10004765	Green	Each
MSA10017732	Hi-Vis Lime Green	Each
Slotted Cap, Small, Staz-On Suspension		
MSA466354	White	Each
MSA466355	Blue	Each
MSA466356	Yellow	Each
Slotted Cap, Small, Fas-Trac Suspension		
MSA477477	White	Each
MSA477478	Blue	Each
MSA477479	Yellow	Each
Slotted Cap, Large, Staz-On Suspension		
MSA473284	White	Each
MSA476928	Blue	Each
MSA473285	Yellow	Each
Slotted Cap, Large, Fas-Trac Suspension		
MSA477482	White	Each
MSA477483	Blue	Each
MSA477484	Yellow	Each

Item No	Color	Unit
Nonslotted Hat, Standard, Staz-On Suspension		
MSA454733	White	Each
MSA454732	Blue	Each
MSA454730	Yellow	Each
MSA454734	Orange	Each
MSA454736	Red	Each
MSA454735	Green	Each
MSA454731	Gray	Each
MSA489360	Hi-Vis Orange	Each
MSA815562	Hi-Vis Lime Green	Each
Nonslotted Hat, Standard, Fas-Trac Suspension		
MSA475369	White	Each
MSA475366	Yellow	Each
MSA475368	Blue	Each
MSA475371	Red	Each
MSA475370	Green	Each
MSA475367	Gray	Each
MSA815570	Hi-Vis Lime Green	Each
MSA10021292	Hi-Vis Orange	Each
Nonslotted Hat, Standard, 1-Touch Suspension		
MSA10058321	White	Each
MSA10058320	Blue	Each
MSA10058318	Yellow	Each
MSA10061516	Hi-Vis Yellow/Green	Each

Replacement suspensions are available. Contact customer service for ordering information.

Sun Shields for Safety Helmets

Extend the brim of the V-Gard safety hat or cap to provide added protection from the sun. Clips right to the safety helmet to protect face, head and ears. Made of polyurethane with a green Lexan® front brim. Medium green 2.5.



Item No	Description	Unit
MSA697290	Sun Shield for V-Gard Cap	Each
MSA697410	Sun Shield for V-Gard Hat	Each

Custom Terri-Band Sweatband

Absorbent sweatband for MSA hard hats brings relief to perspiring workers. Plastic snaps makes hard hat installation easy. The single-napped 100% cotton terry sweatband is reversible and machine washable. Universal size.



Item No	Description	Unit
MSA696688	Custom Terri-Band Sweatband	10/Pack

Cooling Bandana

Works through evaporation to keep you cool on a hot summer day. Soaking in cold water for five to nine minutes provides up to 72 hours of effective, comfortable cooling. Great under a hard hat, or wear it alone on top of your head or around your neck. Cowboy Blue.



Item No	Description	Unit
ALL8410-51	Cooling Bandana Cap	Each

Nomex® Cooling Neck Shade

Keep your neck cool and out of the sun by adding the Nomex Cooling Neck Shade to your hard hat. Soak in cold water for five minutes, attach to the back of your hard hat harness, and enjoy cooling relief that lasts all day. Rehydrate thousands of times. Made with a flame-resistant 100% Nomex outer layer and a cotton inner layer. Ideal for welding or other high heat environments, the Shade both cools and protects the neck. Hand washable. One size fits all. Royal Blue.



Item No	Description	Unit
ALL8406-02	Nomex Cooling Neck Shade	Each

Hard Hat Cooling Liner

Keep cool under a hot hard hat by adding the Hard Hat Cooling Liner. Soak the liner in cold water for 5 to 9 minutes, attach to the hard hat harness with an easy elastic/Velcro® closure, and enjoy cooling relief that lasts all day. Made of 100% cotton. Hand washable. One size fits all. Royal Blue.

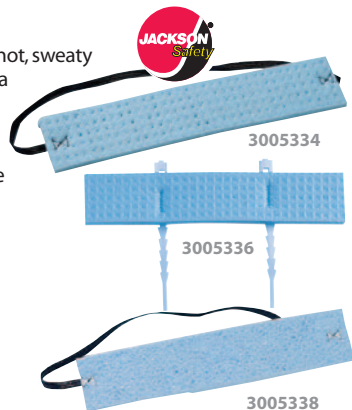


Item No	Description	Unit
ALL8407	Hard Hat Cooling Liner	Each

Disposable Sweatbands

Provide cooling relief for workers in hot, sweaty environments. Each model features a durable, 14" nylon elastic band that is boxstitched to a pad of sponge material measuring 8" x 1 3/4".

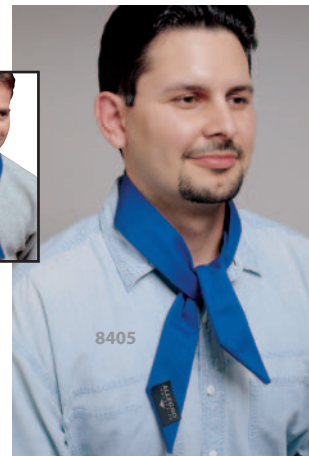
Regular and **Clip-On** models feature an internal gauze panel made of polyester scrim that is sandwiched between two layers of sponge. The Clip-On attaches to hard hats, welding helmets, or sandblast hood suspensions. **Economy** model fills the most budget-conscious requirements.



Item No	Description	Unit
Individually Sleeved		
AME3005334	Regular AA-100 Sweatband	25/Bag
Not Individually Sleeved		
AME3005335	Regular AA-101 Sweatband, Bulk	100/Bag
AME3005337	Regular AA-103 Sweatband	25/Bag
AME3005336	Clip-On AA-102 Sweatband	25/Bag
AME3005338	Economy DB-801 Sweatband	100/Bag

Cooling Wraps

Lightweight and comfortable 100% cotton Cooling Wraps help keep you cool all day long. Simply soak in cold water, then wear around your head or your neck. Stays cool all day. Ideal for outdoor recreation or hot work environments. **Standard Cooling Wrap** is a cost-effective solution. The **Deluxe Neck Cooling Wrap** is a full 3" wide, increasing its cooling effect. Velcro® closure keeps wrap in place. 100% cotton liner. Hand washable. Royal Blue.



Item No	Description	Unit
ALL8405	Standard Cooling Wrap	Each
ALL8405-01	Deluxe Cooling Wrap	Each

Cooling Beanie

Keep your head cool in intense high-heat environments, and the rest of you will feel cool too. Soak the Cooling Beanie in cold water, then wear it on your head for a comfortable cooling effect. Beanie can be worn alone or under a hard hat. Made of 100% cotton. Adjustable elastic and Velcro® closure make donning easy and provide a snug, custom fit. Hand washable. One size fits all. Royal Blue.



Item No	Description	Unit
ALL8408	Cooling Beanie	Each

Chill-Its® 6609 Hard Hat Terry Sweatband

The economical solution for keeping sweat out of your eyes when wearing a hard hat. The Chill-Its Hard Hat Terry Sweatband is designed to fit most hard hat suspension systems, so it stays right where you need it. It's made of soft, absorbent, 100% cotton terrycloth. Machine washable. One size fits all.



Item No	Description	Unit
ERG12440	Chill-Its 6609 Terry Sweatband	Each

Cooling Skull Cap

Turn any hat, including a hard hat, into a cooling hat by adding a Cooling Skull Cap to the inside. Soak the Skull Cap's four lightweight, low-profile disks in cold water for five to nine minutes, then attach with Velcro® tabs to the inside of the hat. Interconnected disks keep your head cool on the hottest days, lasting up to 72 hours on a single soaking. Royal Blue.



Item No	Description	Unit
ALL8411-01	Cooling Skull Cap	Each

WINTER LINERS



Model 6805



Model 6840



Model 6842



Model 6850



Model 6852



Model 6863



Model 6867



Model 6810



Model 6815

Chill-Its® 6805 Single-Layer Liner

For protection in moderately cold conditions. This regular-length liner is made of 100% cotton flannel that has been treated for flame resistance. Features include shirred elastic at the forehead for a tight seal, hook-and-loop chin wrap for a snug fit, interior pockets near the ears for warming packs, a reflective rear stripe for improved conspicuity at night, and suspension ties to attach the liner to your hard hat's suspension. Black.

Item No	Description	Unit
ERG16805	6805, Single-Layer	Each

Chill-Its® 6840/6842 Econo Two-Layer Liners

A 100% polyester shell is coated with water-repellent polyurethane and lined with cozy 100% poly fleece. Elastic around the face opening tightens to close drafty gaps, and the hook-and-loop chin strap fastens for a snug fit. Available in regular length (**Model 6840**) and shoulder length (**Model 6842**). Black with red lining.

Item No	Description	Unit
ERG16840	6840, Regular Length	Each
ERG16842	6842, Shoulder Length	Each

Chill-Its® 6850/6852 Two-Layer Liners

Feature a 100% cotton twill shell with a 100% poly fleece lining. Shirred elastic at the forehead keeps warmth in and cold out. Each model has inside pockets near the ears to accommodate warming packs. Each has suspension ties and a reflective stripe for increased conspicuity. **Model 6850** is regular length and has a hook-and-loop chin strap. **Model 6852** is a longer shoulder length, providing coverage to the neck and throat, and features a hook-and-loop chin wrap that covers more of the chin. Both models are treated for flame resistance and come in one size. Black with red lining.

Item No	Description	Unit
ERG16850	6850, Regular Length	Each
ERG16852	6852, Shoulder Length	Each

Chill-Its® 6863/6867 Three-Layer Liners

Constructed of a 100% quilted nylon shell, a foam mid-layer, and a 100% poly fleece lining for extra warmth in extreme cold conditions. Shirred elastic at the forehead provides a snug fit to keep the cold winds out. Inside, warming pack pockets near the ears accommodate warming packs for extra protection against the cold. **Model 6863** is regular length and has a hook-and-loop chin strap to hold the liner tight to the head. **Model 6867** is shoulder length, providing extra coverage to the neck, and has a hook-and-loop chin wrap that keeps the chin warm. Both models are treated for flame resistance and come in one size. Black with red lining.

Item No	Description	Unit
ERG16863	6863, Regular Length	Each
ERG16867	6867, Shoulder Length	Each

Chill-Its® 6810/6815 Stretch Tubes

Unlike hard hat liners, Stretch Tubes are designed to be pulled over the top of your hard hat, then down around the ears and neck, sealing out the cold wind. Offered in two styles. The Half Cap style (**Model 6810**) covers the ears and forehead. The Full Face style (**Model 6815**) covers everything for complete protection: ears, nose, mouth, chin and neck, leaving an eye slit through which to see. Both styles are made of 100% polyester knit which has been treated for flame resistance. Black.

Item No	Description	Unit
ERG16810	6810, Half Cap	Each
ERG16815	6815, Full Face	Each

All Chill-Its priced each.